



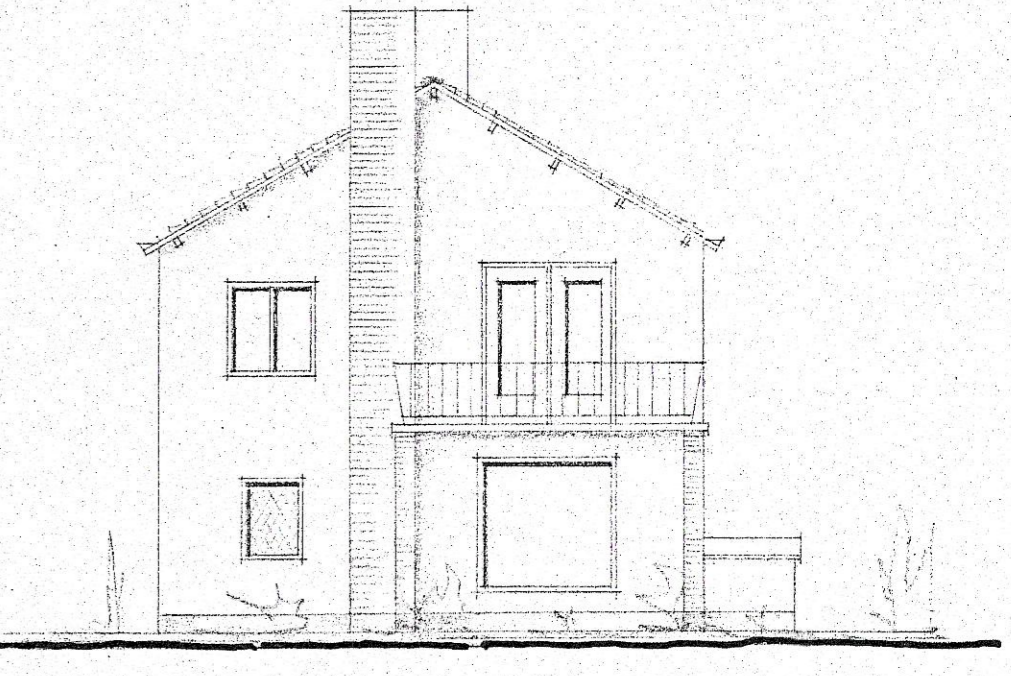
~ NOORDGEVEL ~



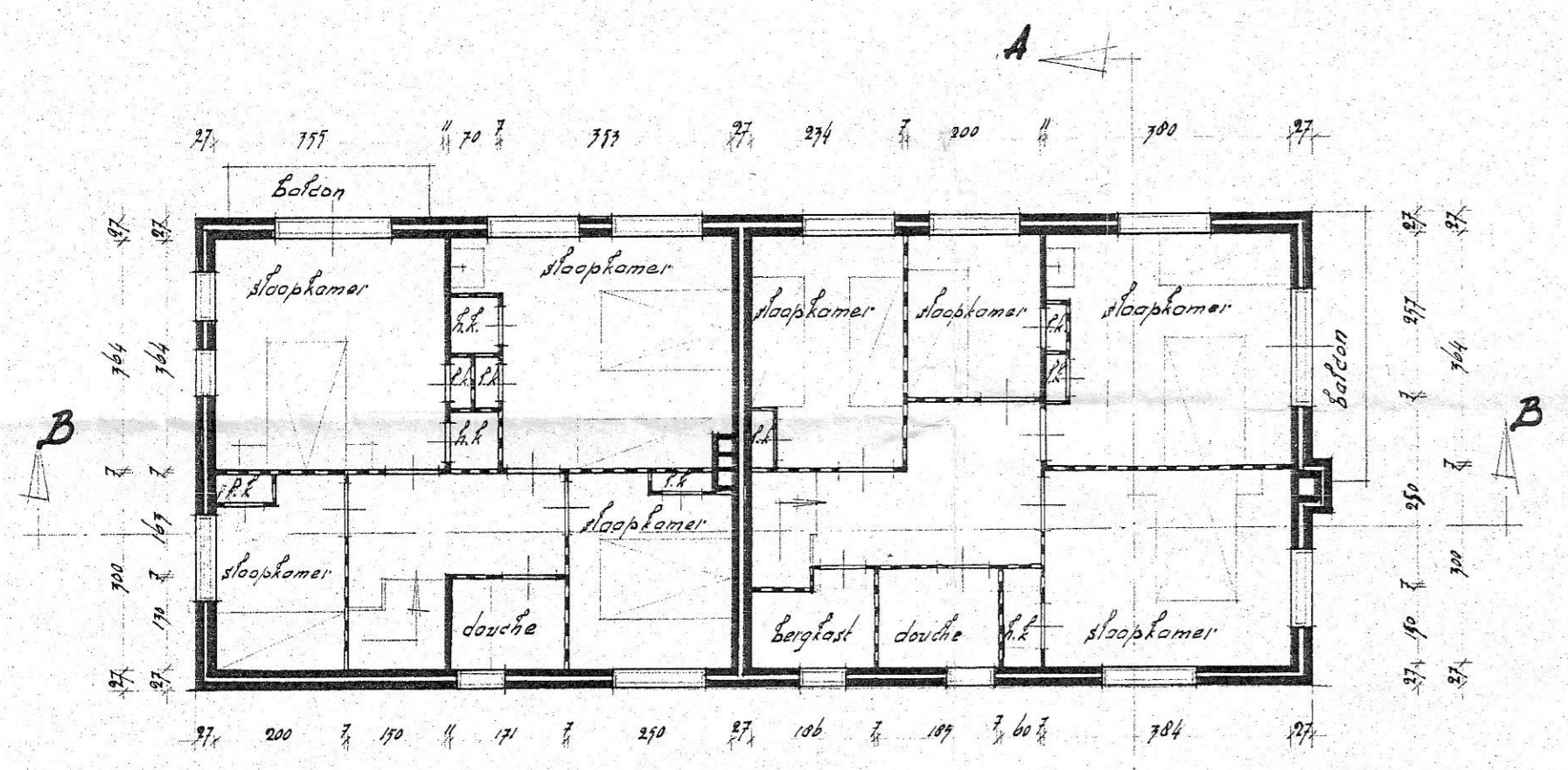
~ OOSTGEVEL ~



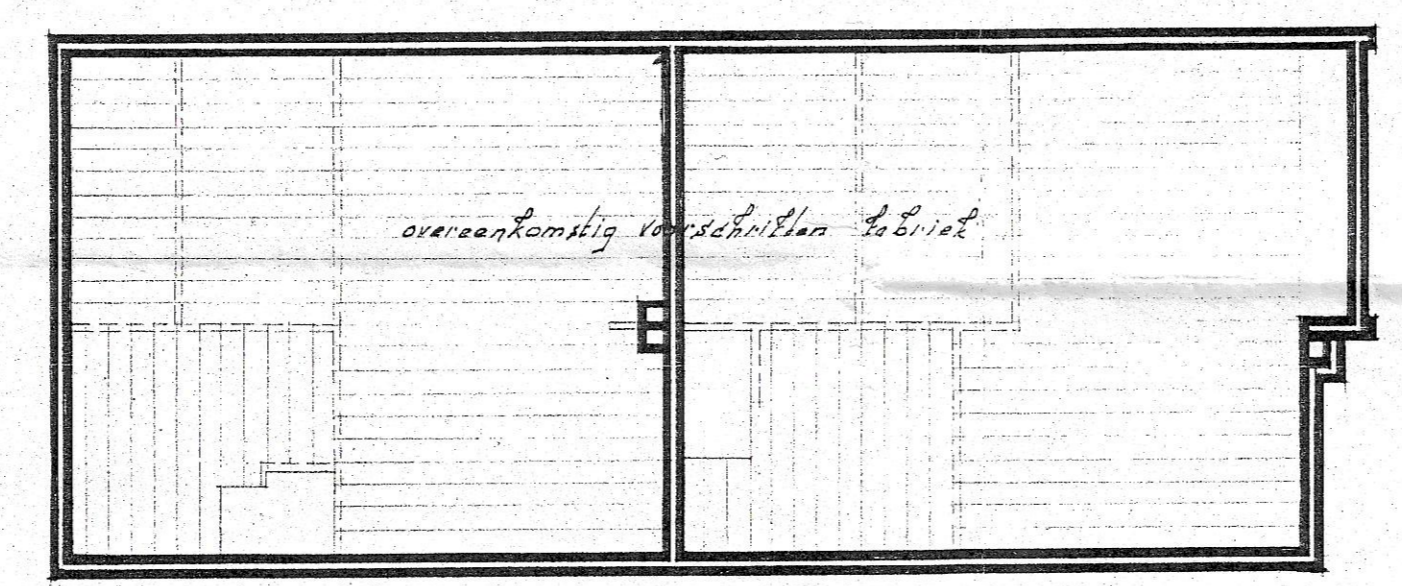
~ ZUIDGEVEL ~



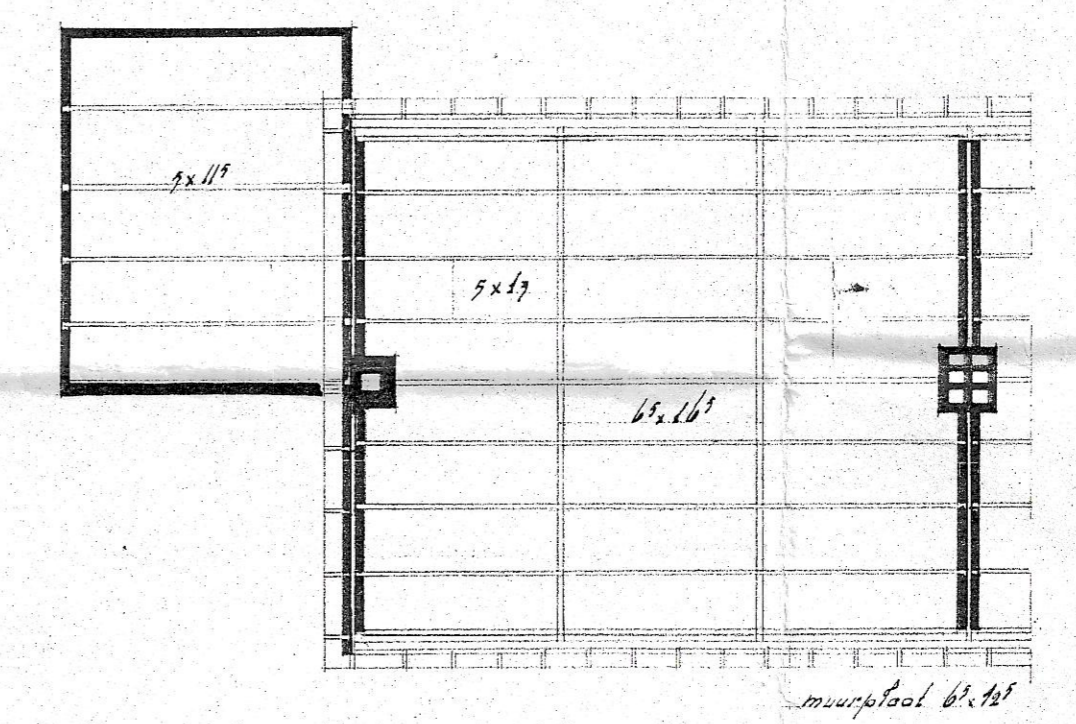
~ WESTGEVEL ~



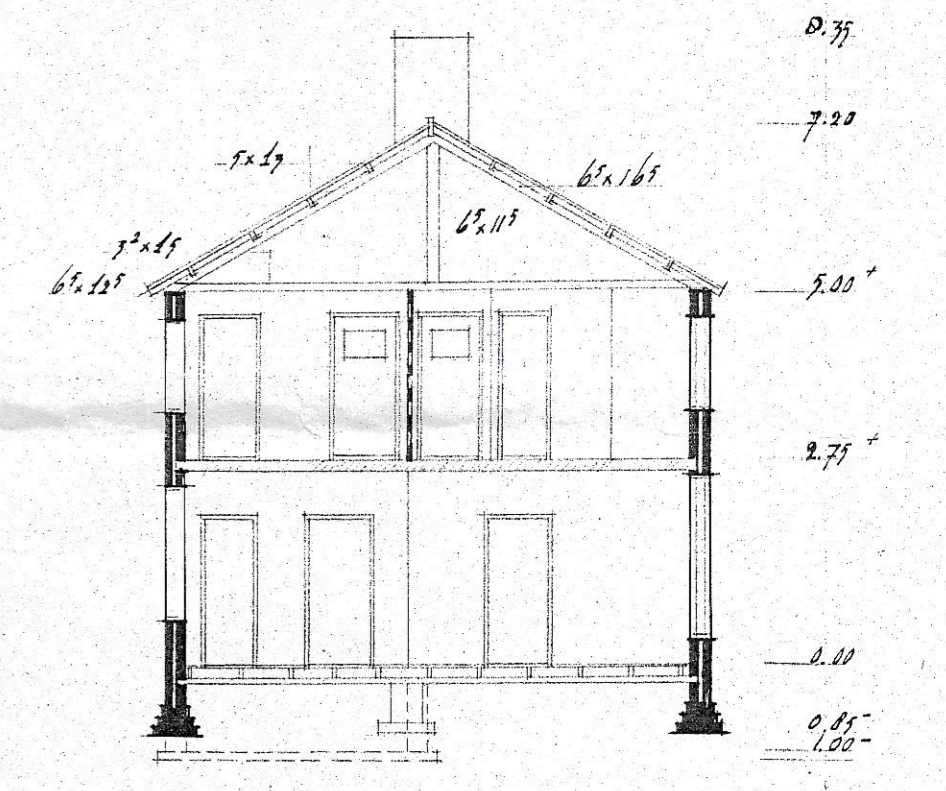
~ VERDIEPING ~



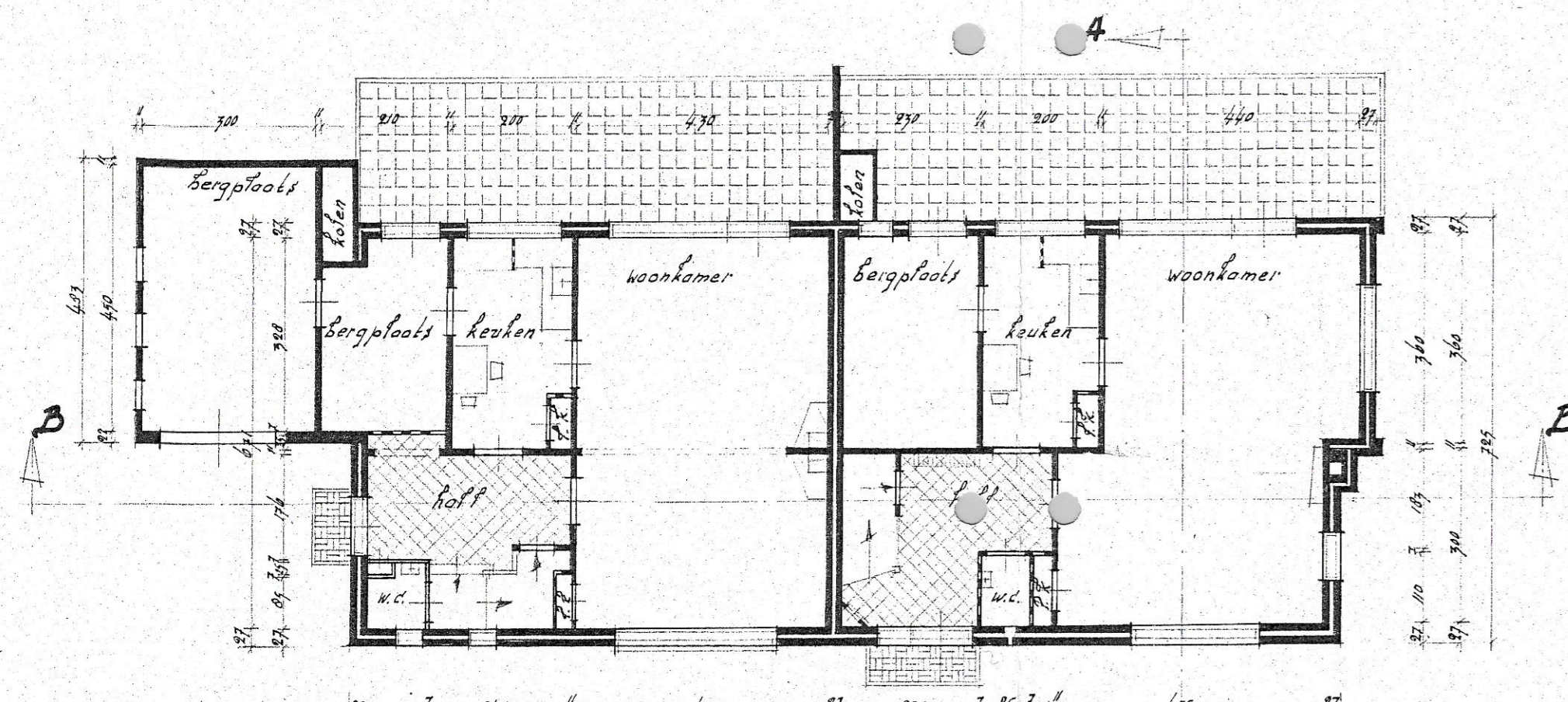
~ VERDIEPINGSVLOER ~



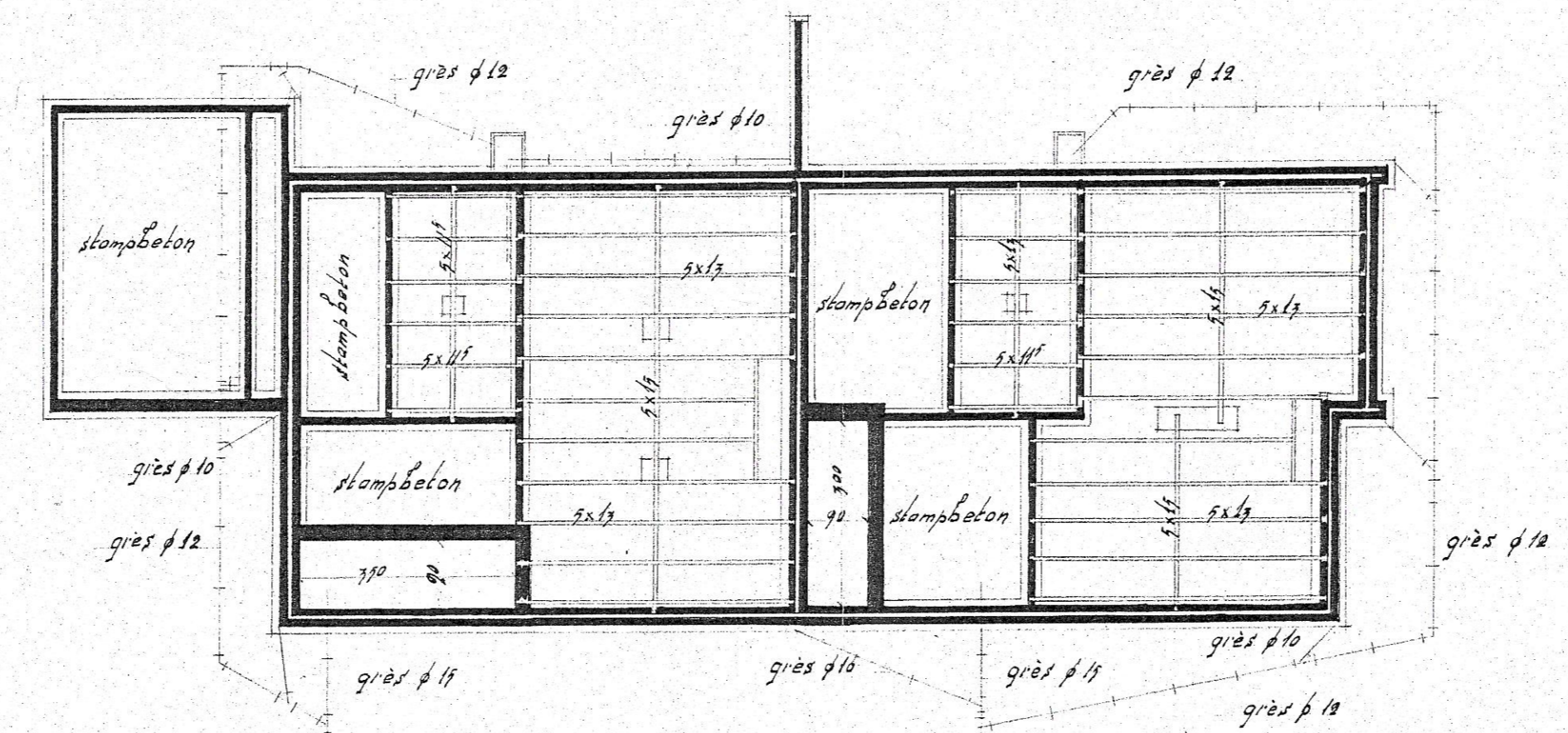
~ KAPPLAN ~



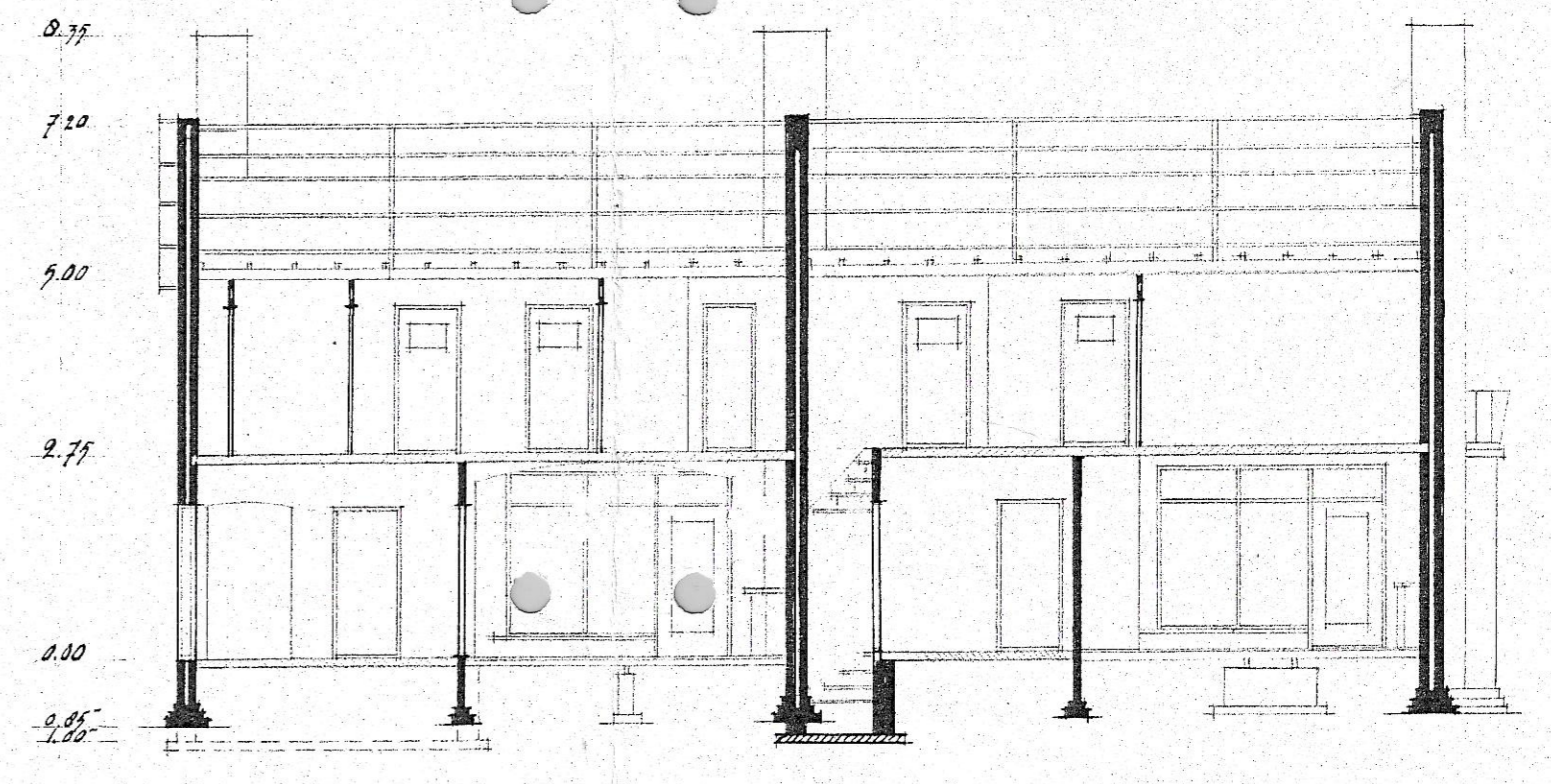
~ DOORSNEDE A-A ~



~ BEGANE GROND ~



~ FUNDERING - RIOLERING - BALKLAAG ~



~ DOORSNEDE B-B ~

schaal: 1:100
 get.: H. de Jong.
 gee.:
 gen.:
 datum: nov. 1934
 type C-1/C-2
 voor goet. en nakdetail zie tek. n. 52

ONTWERP DUBBEL WOONHUIS.

Gemeentewerken
 Eelde
 Formaat A1 T.N. 56
 de gemeente-architect.